

志特集团

股票代码: SZ 300986

运营总部: 粤港澳大湾区-广东中山翠亨新区和清路13号志特新材科技园

华南基地一: 广东省江门市开平翠山湖科技园

华南基地二: 广东省惠州市产业转移工业园

华东基地: 江西省抚州市广昌县工业园区

华中基地: 湖北省咸宁高新技术产业开发区

华北基地: 山东省潍坊市临朐铝模板产业园

西南基地: 重庆市潼南高新区现代制造产业园

西北基地: 甘肃省定西市安定区循环经济园区

海南基地: 海南省临高县金牌港开发区

海外基地: 马来西亚森美兰州

新加坡基地: 新加坡西区

沙特阿拉伯生产基地: 沙特阿拉伯利雅得

服务热线: 400-069-1399

全国销售热线: 0794-3633 999

GETO Group

Headquarters:

Greater Bay Area—No. 13 Heqing Road, Tsuihang New District, Zhongshan City, Guangdong Province

Southern China Production Base I :

Cuishan Lake Science and Technology Park, Kaiping, Jiangmen City, Guangdong Province

Southern China Production Base II :

Huizhou Industrial Transfer Industrial Park, Huizhou City, Guangdong Province

Eastern China Production Base:

Guangchang Industrial Park, Fuzhou City, Jiangxi Province

Central China Production Base:

Hi-tech Industry Development Zone, Xianning City, Hubei Province

Northern China Production Base:

China Aluminium Industrial Park, Linqu, Weifang City, Shandong Province

Southwest China Production Base:

Modern Manufacturing Industrial Park, Tongnan High-Tech District, Chongqing City

Northwest China Production Base:

The Circular Economy Park, Anding District, Dingxi City, Gansu Province

Hainan Production Base:

Gold Medal Port Industrial Park, Lingao County, Hainan Province

ASEAN Production Base:

Negeri Sembilan, Malaysia

Singapore Production Base :

West Region, Singapore

Saudi Arabia Production Base:

Riyadh, Saudi Arabia

Sales Hotline: 0086-760-88589004

E-mail: geto_market@geto.com.cn



20250415V1



单侧支撑模板

SINGLE-SIDE WALL FRAMEWORK

经济 | 高效 | 安全 | 环保

High Economic | High Efficiency | Safety | Environmental-Friendly

公司介绍

Company Profile

GETO is mainly engaged in green construction and new energy.

Green prefabricated building products include aluminium formwork, steel formwork, steel-framed timber formwork, climbing systems, fair-faced concrete formwork, infrastructure formwork and scaffolding products; prefabricated steel structures, assembly precast concrete components, and modular building (including PC and steel structures).

The main focus of new energy is investment, construction, and operation of "Photovoltaics, Storage, and Charging" projects, while providing the "Green Energy Future Living" one-stop residential energy solution.

In 2021, GETO was listed on the ChiNext board of the Shenzhen Stock Exchange in China. We have established 12 production bases around the world and registered 32 international trademarks in different countries and regions.

志特集团主营绿色装配式建筑和新能源两大板块。

绿色装配式建筑包括：铝模，钢模，钢框木模，爬升式模架，清水混凝土模架，公基建类模架；装配式建筑钢结构，装配式建筑PC，模块化房屋(包括PC、钢结构两大类)。

新能源主营工商业“光、储、充”项目投资、建设、运维，“绿能未来居”一站式家庭能源解决方案。

“志特新材”于2021年在A股创业板挂牌上市，目前已在全球设立12大生产基地，在32个国家和地区注册了“GETO®”国际商标，产品和服务遍及全球。

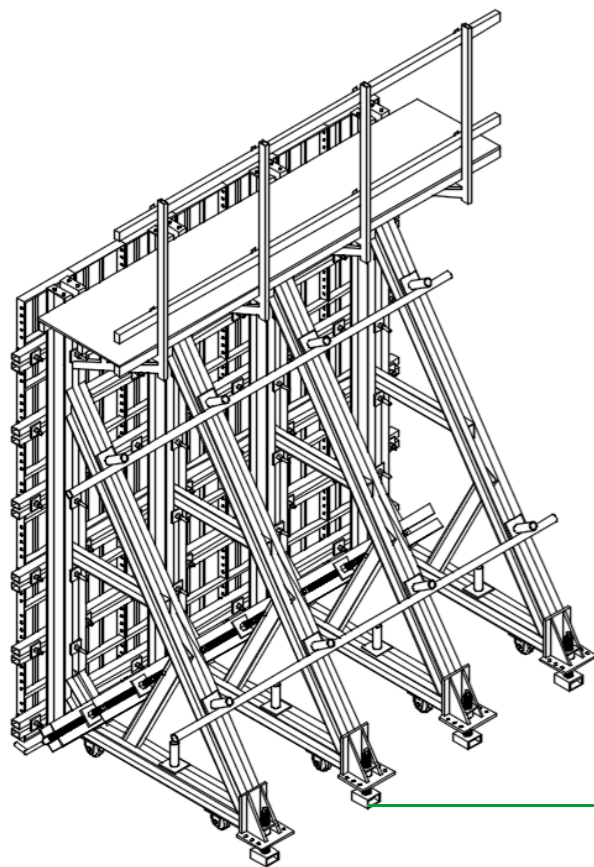
目录

Contents

01	● Product Introduction 产品介绍	P1
02	● Product Category 产品分类	P3
03	● Competitive Advantages 优势对比	P4
04	● Framework Construction Flow 施工流程	P5
05	● Material Composition 材料组成	P12
06	● Project Case 工程案例	P16

PRODUCT INTRODUCTION
产品介绍

01



单侧支撑模板
SINGLE-SIDE WALL FRAMEWORK

- 单侧支撑模板是针对地铁车站、地下室外墙等防水要求高, 无法使用螺杆对拉加固, 必须采取单侧支设模板, 浇筑混凝土时一侧支模为施工方法的模板系统。

Single-Side Framework is catered for casting building structures that have strict waterproofing demand and unable to be strengthened by using tie-rod system, such as railway stations and external wall of basements. Due to certain unique characteristics, these structures need to be casted by single sides.

- 传统的三角桁架式单侧支撑模板, 可根据机械及场地适用情况可采用塔吊、汽车吊、人力推行、轨道行进等方式进行架体移动与周转。

The conventional triangular truss type single-side wall framework can be moved and turned over by using tower crane, mobile crane, manpower push, truck moving or other methods, based on machinery and site applicability.



塔吊
TOWER CRANE



汽车吊
MOBILE CRANE



人力推行
MANPOWER PUSH



轨道行进
TRUCK MOVING

- 志特通过分析市场动态和调研客户意向, 同时充分考虑综合成本、产品高周转率、施工便利性、不同应用场景等因素, 成功研发更符合实际施工要求和绿色建筑发展趋势的轻量化单面模支架体系——铝梁式单侧支撑模板。

In the process of launching single-side framework, GETO fully consider relevant integrative factors include cost, product turnover rate, operational convenience and applicability to different situation. After conducting a thorough market trend analysis and customer purchase intention research, GETO successfully developed a lightweight single-side wall framework that is more adhere to realistic construction requirements and green building development trend - Aluminium beam type single-side framework.



低综合成本
Integrated Cost



高周转率
HIGH TURNOVER RATE



施工便利
EASY-TO-OPERATE



多应用场景
MULTIPLE APPLICABILITY

- 以上单侧支撑模板系统适用于浇筑高度≤7.5米的结构类型。

This type of single-side framework is applicable to building structures with casting height that is less or equivalent to 7.5m.

PRODUCT CATEGORY

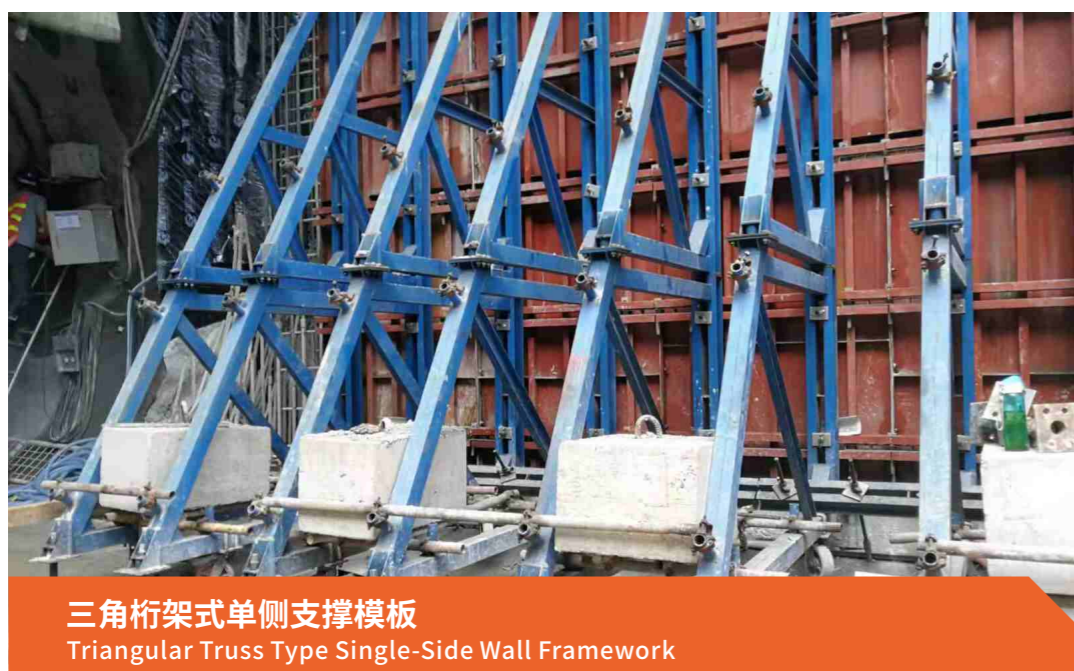
产品分类

02

COMPETITIVE ADVANTAGES

优势对比

03



	铝梁式单侧支撑模板 Aluminium Beam Type Single-Side Wall Framework	三角桁架式单侧模板 Triangular Truss Type Single-Side Wall Framework
架体样式 Framework Pattern		
适用单面墙高度 Applicable Single-Side Wall Height	3.0m及以下 3.0m and below	3.0m - 7.5m
布置间距 Layout Spacing	600mm	800mm
铝件重量 Weight of Aluminium Components	16.92kg	-
铁件重量 Weight of Steel Components	106.15kg	208.37kg
是否需要背楞 Waler in Need	否 No	是 Yes
架体总重量 Total Weight of the Framework	125.35kg	208.37kg
优点 Advantages	<ul style="list-style-type: none"> ①单侧模板架体较轻, 仅为三角桁架式单侧模板重量的60%, 可以实现人工移动或搬运; ②材料重复利用率高, 部分材料可周转到其他施工场景; ③材料成本相对更低; ④铝合金残值率高; ⑤人工操作少, 施工更安全; ⑥符合环境友好型建筑要求。 <p>① The framework has lighter weight. Its weight is only 60% of the weight of the triangular truss single-side framework, which can be manually moved or lifted;</p> <p>② High reuse rate of material, with part of the product materials can be turned over to other construction sites for use;</p> <p>③ Lower material cost;</p> <p>④ Aluminium components has higher scrap values;</p> <p>⑤ Less labor works and safer operation;</p> <p>⑥ Compliant with environmental-friendly building requirements.</p>	<ul style="list-style-type: none"> ①架体整体性强 (大部分架体在厂内焊接); ②现场装拆的构件少, 施工效率较高; ③稳定的架体结构, 受力性能更好。 <p>① Overall framework is strong, with majority of the components welded in a factory;</p> <p>② Less works for installation and dismantlement, contributing to higher working efficiency on site;</p> <p>③ Stable frame structure with better mechanical performance.</p>

Product Introduction
Product Category
Competitive Advantages
Construction Flow
Material Composition
Project Case

产品介绍
产品分类
优势对比
施工流程
材料组成
工程案例

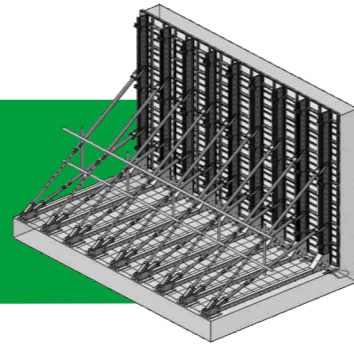
FRAMEWORK CONSTRUCTION FLOW

施工流程

04

铝梁式单侧支撑模板-安装施工方法

Aluminium Beam Type Single-Side Wall Framework Installation and Operational Method

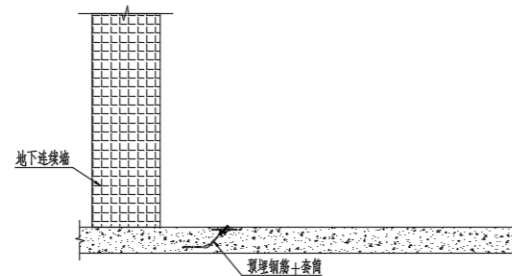


• 安装流程 INSTALLATION FLOW

Step 1:

浇筑基础底板, 在对应位置预埋好锚固螺栓;

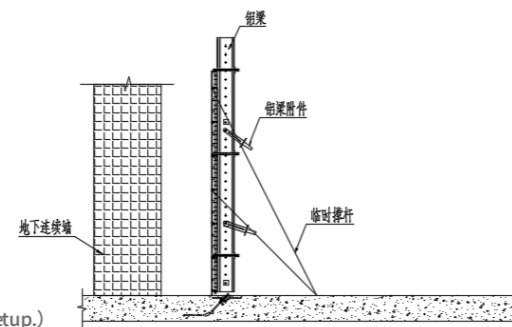
Cast the base plate and embed the anchor bolts at corresponding positions



Step 2:

安装墙板及铝梁、铝梁 (安装墙板前涂刷脱模剂, 支设模板时应边临时采用钢管固定);

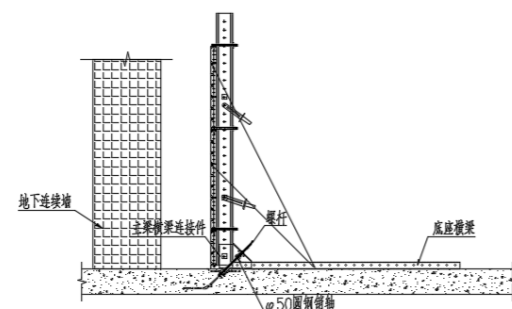
Install wall panel and aluminium beam. (Apply mold release agent prior to wall panel installation. Temporarily use steel pipe to fix the framework during the setup.)



Step 3:

安装主梁横梁连接件和底座横梁;

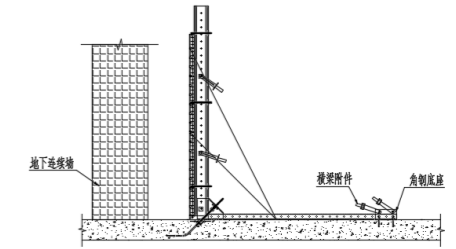
Install connecting components between main beam and horizontal beam, as well as base horizontal beam.



Step 4:

安装底座横梁的角钢底座及横梁;

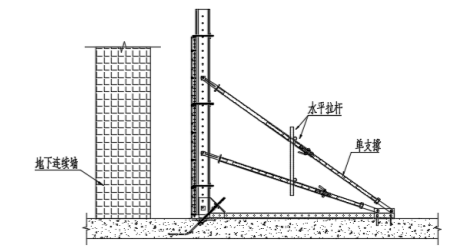
Install horizontal beam, and corner steel base of the base horizontal beam.



Step 5:

安装单支撑及水平拉杆;

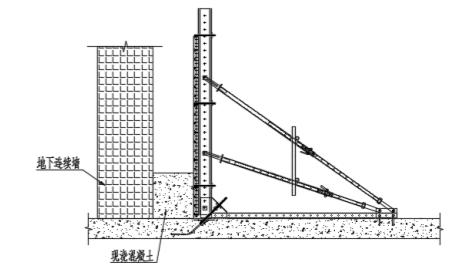
Install single props and horizontal rods.



Step 6:

调校垂直度, 检查预埋件紧固后浇筑混凝土。

Adjust the straightness of the framework. Cast concrete after the embedded components are fully-tightened.



• 拆除流程 DISMANTLEMENT FLOW

工具准备: 锤子、钩子、撬棍、扳手、图纸

Tools to be prepared: Hammer, Hook, Crowbar, Spanner, Construction Drawings

Step 1:

外墙混凝土浇筑完24小时后 (混凝土强度达到50%以上), 先拆除水平拉杆, 再松动单支撑、横梁的角钢底座, 后松动埋件部分;

After concrete cast for external wall is completed by 24 hours (Concrete strength has reached over 50%), dismantle the horizontal rods, loosen the single props, corner steel base plate of horizontal beam, and loosen the embedded parts.

Step 2:

拆除各个部件的连接螺栓和销轴, 并分类码放;

Dismantle the connecting bolts and pins of every component, and keep them according to their respective classification code;

Step 3:

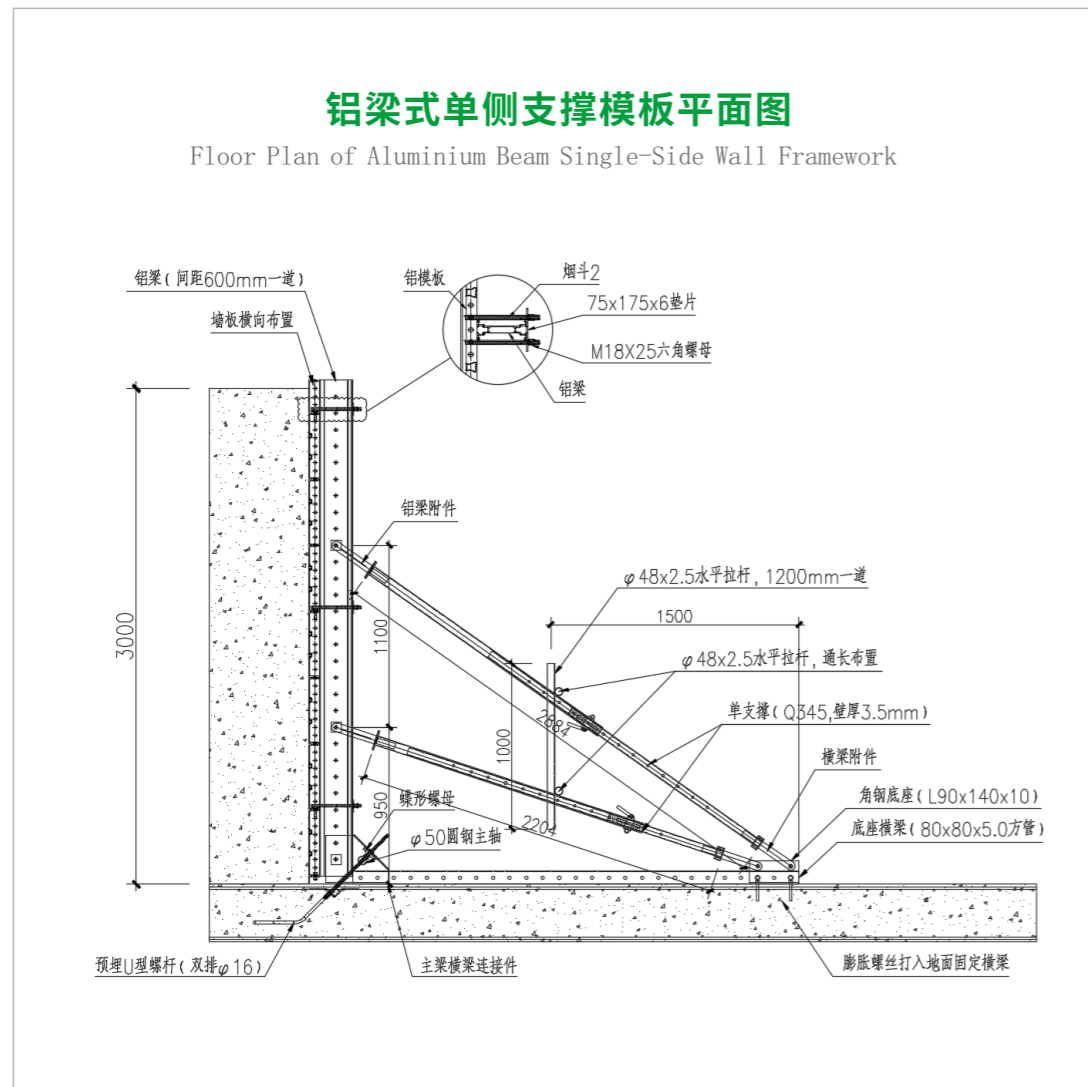
拆除墙板, 根据具体的方案进行材料转运;

Dismantle the wall panels, and transfer the materials by specific solution plans;

Step 4:

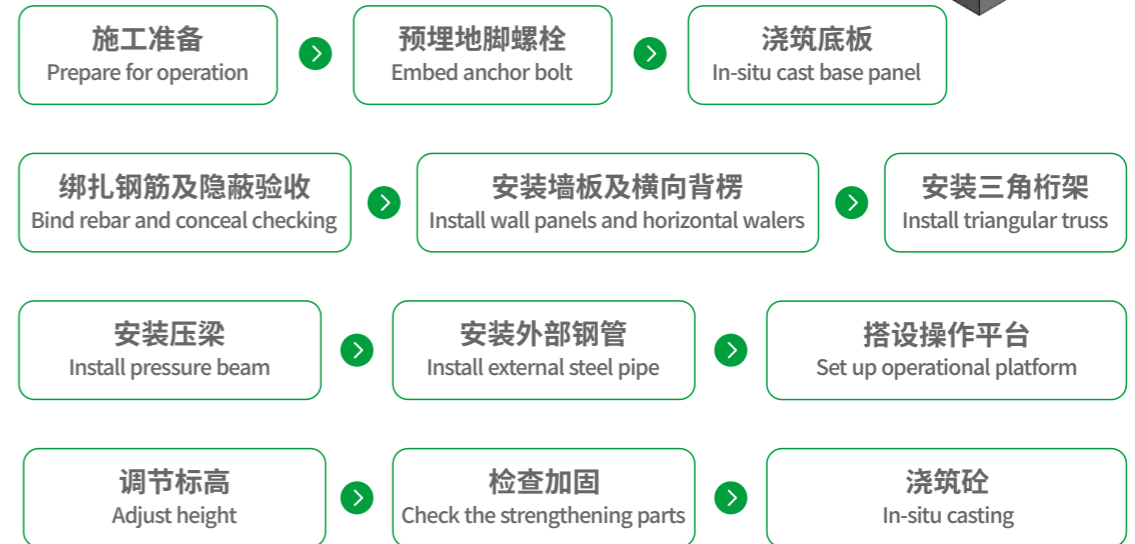
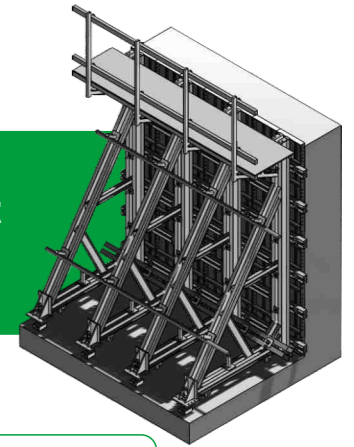
拆模后进行混凝土的养护工作, 及时涂刷养护剂, 冬季施工时墙体注意保温, 防止墙体产生裂缝导致渗水。

After the framework is dismantled, maintenance of the concrete is carried on with the curing agent applied in time. For the construction during winter times, the concrete wall should be kept warm to avoid water leakage resulted from wall cracks.

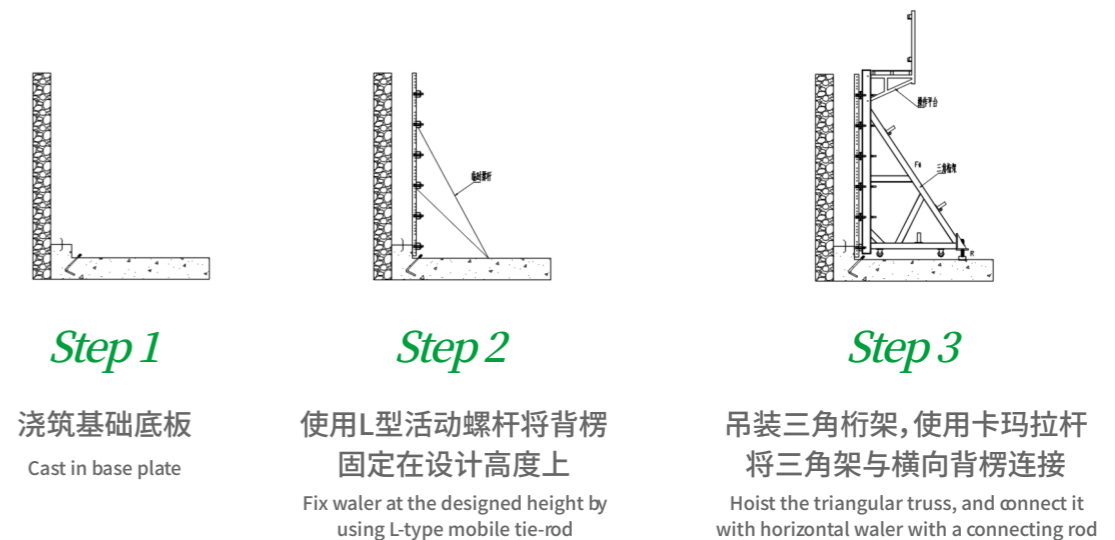


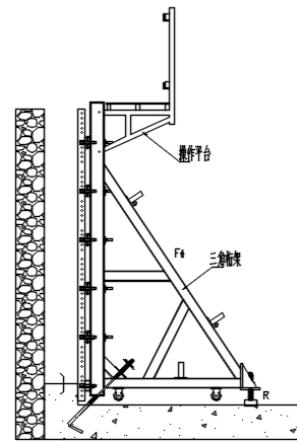
三角桁架式单侧支撑模板-安装施工方法

Triangular Truss Type Single-Side Wall Framework Installation and Operational Method



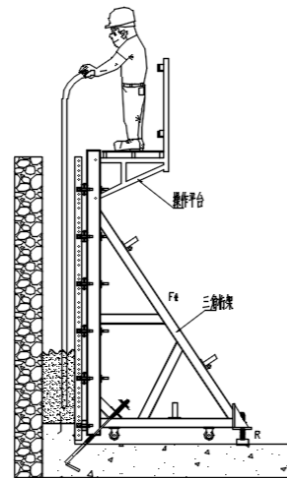
• 安装流程 INSTALLATION FLOW





Step 4

安装三角桁架底部压梁,
安装压梁后安装外部水平钢管
Install the base pressure beam of triangular truss,
and then install external horizontal steel pipe



Step 5

调校垂直度
Adjust the verticality

• 拆除流程 DISMANTLEMENT FLOW

工具准备: 锤子、钩子、撬棍、扳手、图纸

Tools to be prepared: Hammer, Hook, Crowbar, Spanner, Construction Drawings

现场设备: 塔吊或吊车

On-Site Equipment: Tower crane or mobile crane

Step 1:

外墙混凝土浇筑完24小时后(混凝土强度达到50%以上),
先松动支架后支座, 后松动埋件部分

After 24 hours upon completion of external wall casting (concrete strength reach over 50%),
loosen the bracket and rear support before loosening the embedded part.

Step 2:

彻底拆除埋件部分, 并分类码放

Dismantle the embedded part totally and arrange them by categories

Step 3:

分片整体退模, 根据具体的方案进行材料转运, 通常采用吊车
将模板吊运至下一节施工段

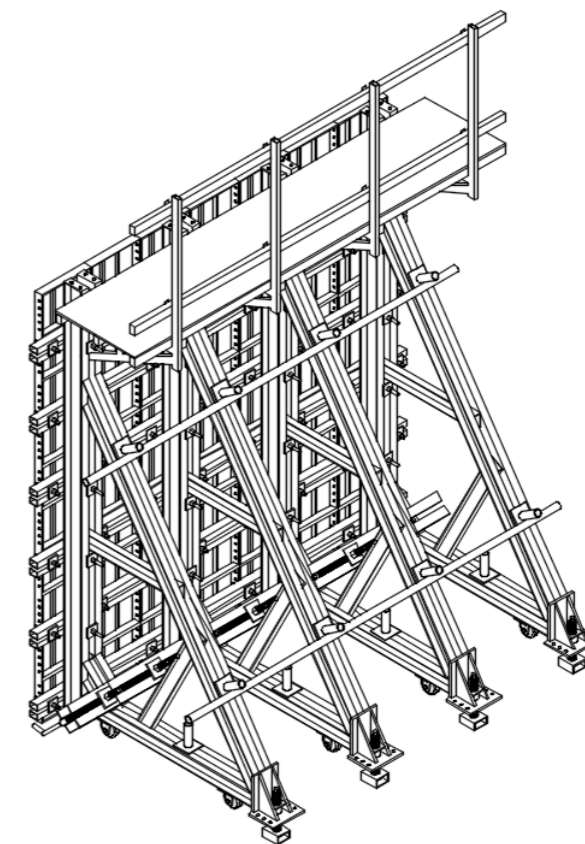
Dismantle complete framework by pieces, and the material is transferred based on specific solution plans.
The framework is usually hoisted by a crane to the next construction section.

Step 4:

拆模后进行混凝土的养护工作, 及时涂刷养护剂, 冬季施工时墙体注意保温,
防止墙体产生裂缝导致渗水

After the framework is dismantled, maintenance of the concrete is carried on with the curing agent applied in time.
For the construction during winter times, the concrete wall should be kept warm to avoid water leakage resulted from wall cracks.

三角桁架式单侧支撑模板立体图 3D Plan of Triangular Truss Type Single-Side Wall Framework



单侧支撑模板浇筑注意事项

Attention Details for Single-Side Wall Framework Casting



1 控制浇筑速度, 避免涨模

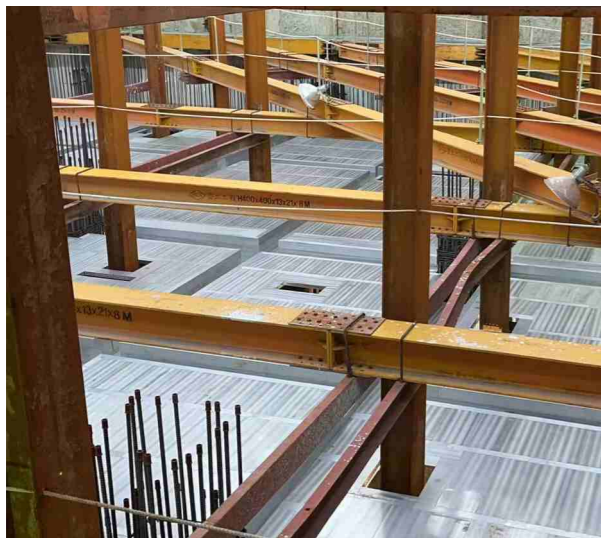
Control the speed of casting to prevent bulging.

2 建议分段浇筑和对称浇筑, 有利于控制模板走位, 提高混凝土成型质量

Suggest to cast by sections with leveraging, as to fix the position of the framework and increase the casting quality of the concrete outcome.

3 建议分层浇筑, 有利于混凝土中气体排出, 减少出现混凝土表面的蜂窝麻面的情况

Suggest to cast by levels, as to assist the elimination of gas in concrete and reduce the occurrence of honeycomb phenomena on the concrete surface.



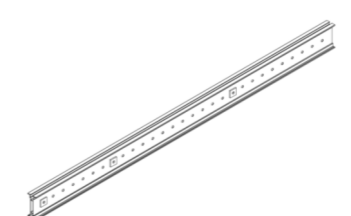

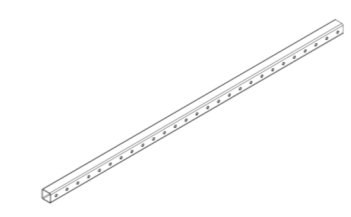

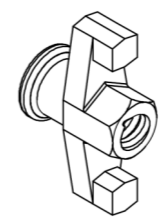
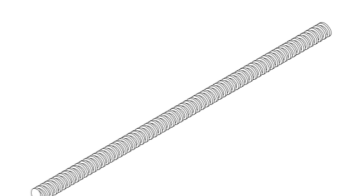
安装中
INSTALLATION



浇筑效果
CASTING EFFECT

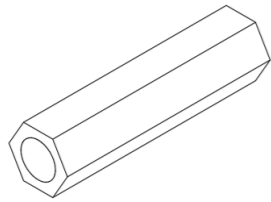
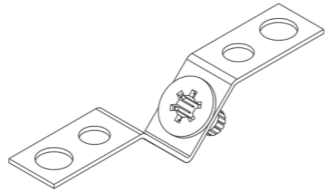
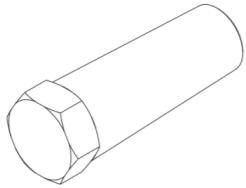
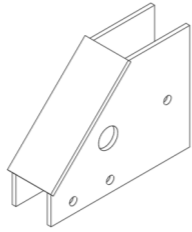
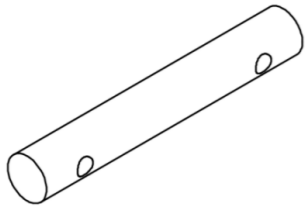
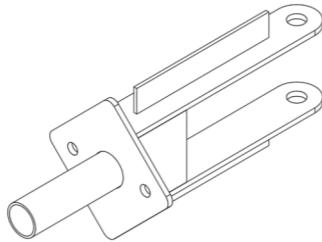
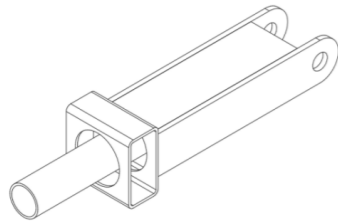
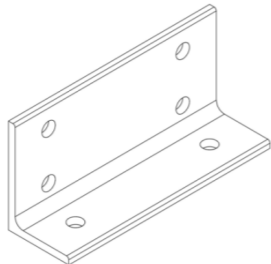
MATERIAL COMPOSITION

材料组成

铝梁式单侧支撑模板 Aluminium Beam Type Single-Side Wall Framework	
 <p>H×B=200×80mm, L=3000mm</p> <p>铝梁 Aluminium Beam</p>	 <p>内管: Φ48×3500mm, 外管: Φ60×3500mm, 插销: Φ16mm Internal tube: Φ48×3500mm, External tube: Φ60×3500mm, Round pin: Φ16mm</p> <p>单支撑 Prop</p>
 <p>80×80×5.0mm矩形管 80×80×5.0mm Square tube</p> <p>底座横梁 Base Horizontal Beam</p>	 <p>U型螺杆 (双Φ16) U-type tie rod (Double Φ16)</p> <p>锚固螺杆 Anchor Screw</p>
 <p>M16</p> <p>蝶形螺母 Wing Nut</p>	 <p>M16×400</p> <p>M16螺杆 M16 Tie-Rod</p>

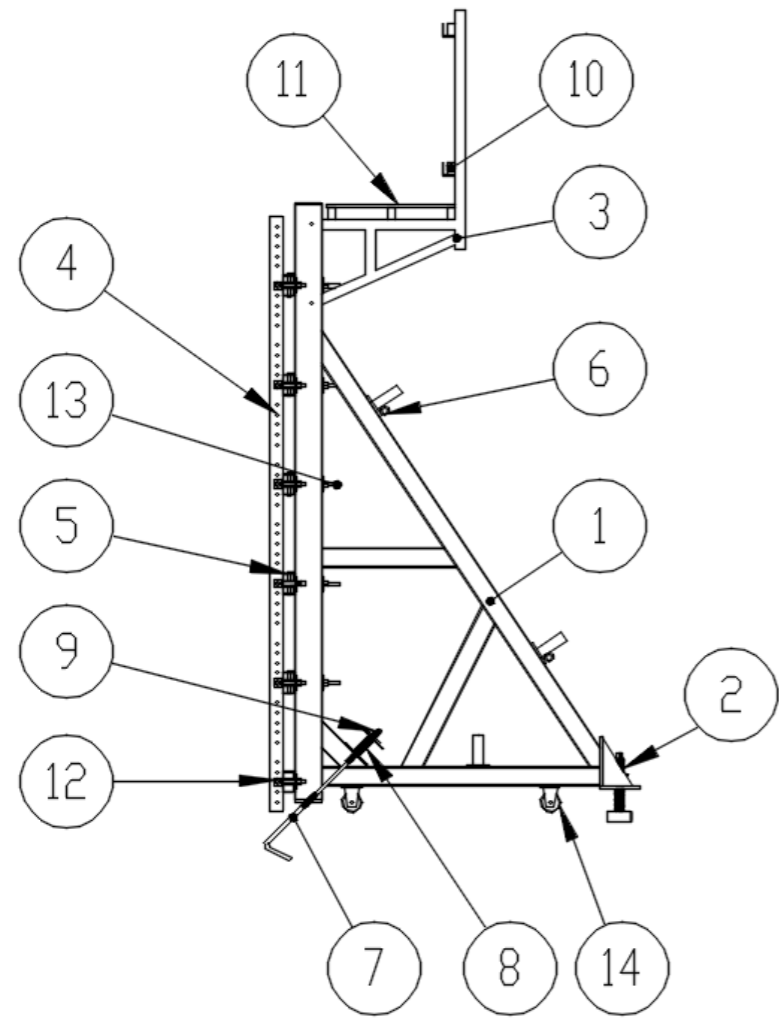
Product Introduction
Product Category
Competitive Advantages
Construction Flow
Material Composition
Project Case

产品介绍
产品分类
优势对比
施工流程
材料组成
工程案例

	
M16x100 M16x100六角螺母 M16x100 Hexagonal Nut	V型拉撑支架 V-Type Tie-Rod Bracket
	
预埋螺焊套筒 Embedded Tie-Rod Sleeve	主梁横梁连接件 Connecting Accessory for Main Beam and Horizontal Beam
	
圆钢主轴 Round Steel Spindle	铝梁附件 Aluminium Beam Attachment
	
横梁附件 Horizontal Beam Attachment	角钢底座 Corner Steel Base Plate

	
烟斗2 Tie-Rod for Waler 2	垫片 Washer
	
M18x25 M18x25六角螺母 M18x25 Hexagonal Nut	销轴 Pin
	
R型销 R-Type Pin	六角螺丝、螺母 Hexagonal Screw & Nut
	
φ48x2.5 水平拉杆 Horizontal Rod	旋转扣件 Swivel Clamp

三角桁架式单侧支撑模板
Triangular Truss Type Single-Side Wall Framework

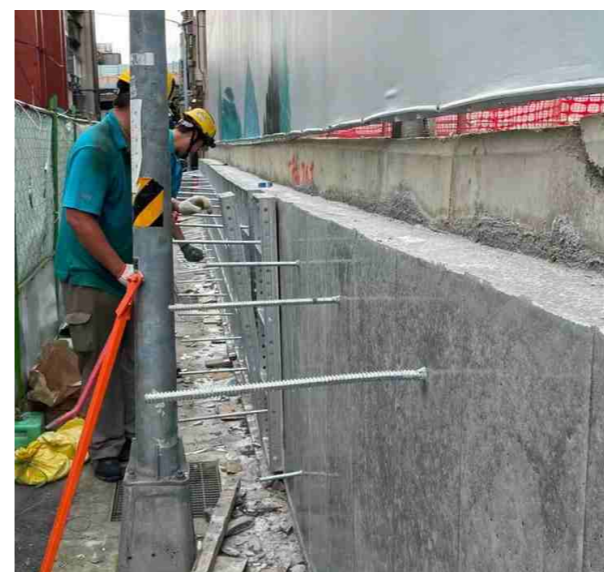
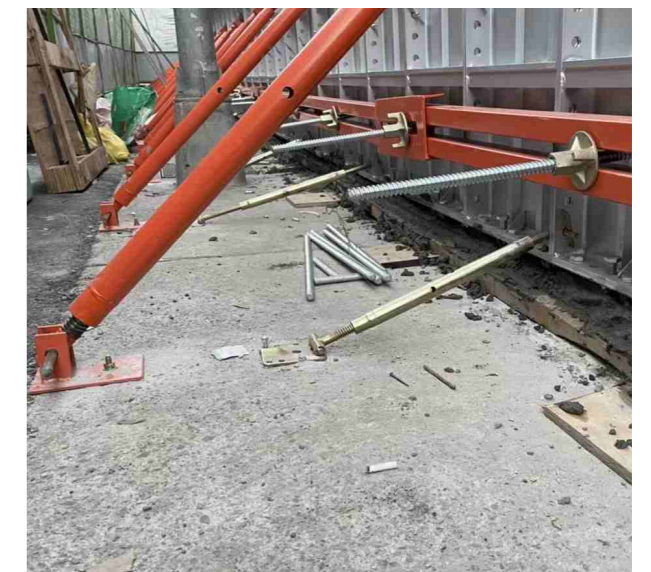
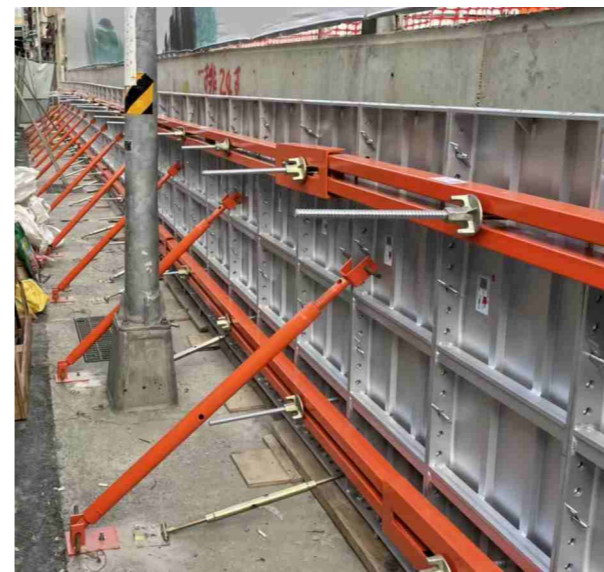


- ① 单侧支架
Single-Side Support
- ② 调节螺母
Adjustment Nut
- ③ 平台支架
Platform Support
- ④ 铝模板
Aluminium Framework
- ⑤ 横向背楞
Horizontal Waler
- ⑥ 水平拉杆
Horizontal Rod
- ⑦ 地脚螺栓
Anchor Bolt
- ⑧ 压梁
Pressure Beam
- ⑨ 螺母、垫片
Nut & Gasket
- ⑩ 方木栏杆
Square Wood Railing
- ⑪ 木胶板
Plywood Panel
- ⑫ L型活动螺栓
L-Type Mobile Bolt
- ⑬ 卡玛拉杆
Connecting Rod
- ⑭ 万向轮
Universal Wheel

PROJECT CASES
工程案例

台湾单侧支撑模板测试项目

Single-Side Wall Framework Testimonial Project in Taiwan, China



Product Introduction
Product Category
Competitive Advantages
Construction Flow
Material Composition
Project Case

产品介绍
产品分类
优势对比
施工流程
材料组成
工程案例